

HIRSCH Czech Republic



PRODUCT CATALOG 2023

ABOUT US

The company **HIRSCH Czech Republic s.r.o.** was established in January 2023 through the merger of Novopol s.r.o. and Morapal s.r.o.

Novopol s.r.o., based in Velký Třebešov near Česká Skalice, had a long history as a manufacturer of expanded polystyrene and corrugated cardboard packaging, dating back to 1992. Similarly, Morapal s.r.o., founded in the same year under the name Morávek and Král s.r.o., was involved in the production of wooden products, as well as products made from expanded polystyrene.

The company's headquarters:

HIRSCH Czech Republic s.r.o.

Šumperská 1352

783 91 Uničov

M: **+420 724 329 740**

www.hirsch.cz



ABOUT US

In the Czech Republic, there are four manufacturing plants where we process and produce expanded polystyrene (EPS) products, products made from moulded pulp (MP), wooden products, and our own recycled EPS material (known as rEPS).

Production plant Velký Třebešov

- The production of EPS packaging
- UFH (underfloor heating)
- Wire Cutting EPS

Production plant Česká Skalice

- The production of EPS (insulation)
- The production of MP (moulded pulp)
- The production of rEPS (recycled EPS)

Production plant Uničov

- The production of wooden spacers and inserts.
- The production of EPS packaging

Production plant Červenka

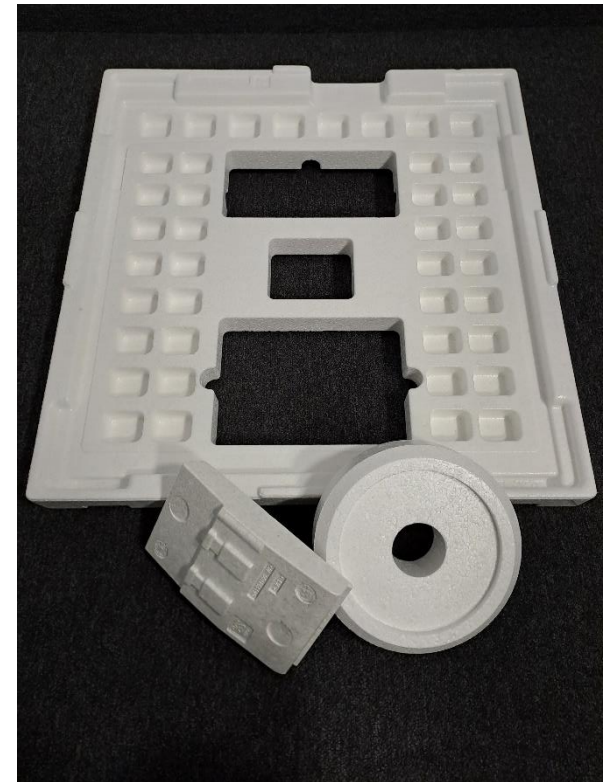
- The production of wooden spacers and inserts.
- The production of Briquettes



EPS

For its excellent properties, strength, ability to dampen shocks and vibrations, malleability, flexibility, and dimensional stability in relation to low weight and cost, EPS (Expanded Polystyrene) packaging holds a significant share in the packaging materials market. In some industries, these products are indispensable. Packaging for electronics, pharmaceuticals, engineering equipment and components, furniture, food, etc.

EPS can be combined with other materials such as wood, various foils, etc. It serves as a filling and padding material and is also the most common and efficient material for building insulation. In our company, Hirsch Czech Republic, we engage in all methods of EPS processing, from contour cutting on CNC machines to the production of molded products on molding machines, whether as packaging, technical parts, or building insulation and components.



MOULDED PULP (MP)

Moulded pulp is a product made from recycled paper used for various packaging, boxes, and similar materials. It is an environmentally friendly alternative that contributes to environmental protection by utilizing recycled paper instead of new raw materials.

With its versatility and flexibility, corrugated cardboard adapts to various needs and uses. Thanks to its strong and rigid composition, moulded pulp is ideal for protecting and packaging products. It is resistant to shocks, deformation, and provides reliable protection during handling and transportation. At the same time, it is lightweight and easy to process, simplifying handling and facilitating storage.



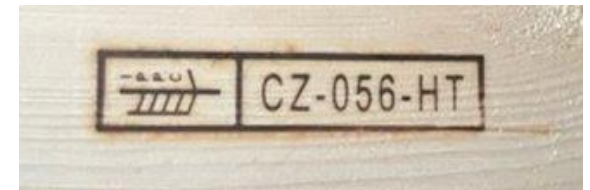
WOODEN SPACERS AND INSERTS

Within the packaging material industry, we currently process three types of wood: spruce, pine, and larch. We manufacture various lengths and widths of reinforcements, as well as a wide range of wooden inserts.

The final products are delivered (as per customer requirements) with labeling confirming the treatment of the timber through drying. This ensures the elimination of possible pests in the wood. In addition to certificates confirming the degree of timber treatment from suppliers, our company possesses its own timber drying facility with a capacity of 80 m³.

Our advantage lies in flexibility and the ability to produce both through machinery and manual work for special projects.

Some of our most significant customers include Miele, Siemens, Mora, and others.



BRIQUETTES

The most recent product is the production of wooden briquettes from our own waste materials. We use cutting-edge technology from the German manufacturer RUF for this production.



RECYCLED EPS (rEPS)

We have our own extrusion line with a production capacity of 350 kg/hour.

In the processing of waste EPS, we are leaders in this production due to the fact that only one other company in the EU utilizes identical technology.

Our product is certified according to EN 15343:2007. Additionally, we have conducted all necessary tests and material analyses.



3D PRINTING OF MOLDS

In the light of constant need to improve processes and leverage every technological innovation, we are capable of internally producing our own molds using 3D printing.

The use of 3D printing for manufacturing molds for corrugated packaging offers flexibility and speed in creating unique molds for specific needs. This technology enables the creation of complex geometries and details, which can lead to innovative and creative results.





THANK YOU FOR YOUR ATTENTION

HIRSCH Czech Republic s.r.o.

Šumperská 1352

783 91 Uničov

M: +420 724 329 740

www.hirsch.cz